



Magnetic Island

Zero Waste workshop



We can sort it out

Waste Plan

10 Steps

1. Scoping visit – what, where, why, how
2. Waste Audit for data
3. Community Consultation
 - surveys, meetings, focus groups
4. Stakeholder Engagement
5. Vision
6. Strategies
7. Action Plan
8. Targets
9. Timeline
10. Budget

Lord Howe Island



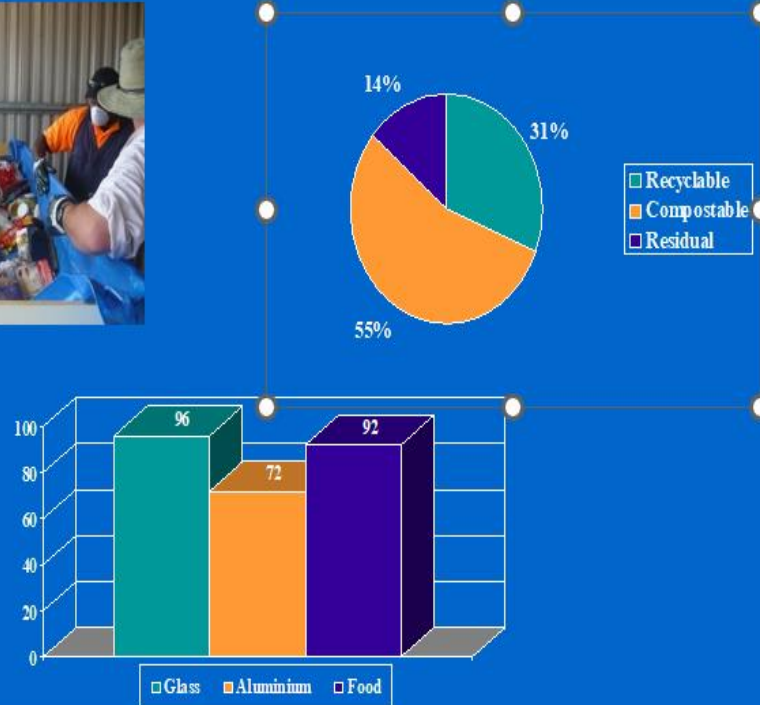
Pre 2000 – waste disposal



Waste Audit



Feb 1998



Consultation

- Resident survey
- Visitor survey - 425 surveys

Consultation meetings

- Accommodation
- Restaurants
- Store keepers
- Residents
- School

...want World Best Practice

Target: 86% diversion from landfill

Strategic Framework

Vision: *Working towards Zero Waste*

Mission: *Manage waste in a sustainable way for the benefit of current and future generations of Islanders and visitors.*

Goals: *To maximise resource recovery and minimise waste generation, treatment and disposal through the use of economic instruments and community education in accordance with best practice principles and demonstrating compliance with:*

- The waste management hierarchy
- The need for continuous improvement
- Transparency of pricing policies.
- Social equity
- Compliance with statutory obligations.

• • •

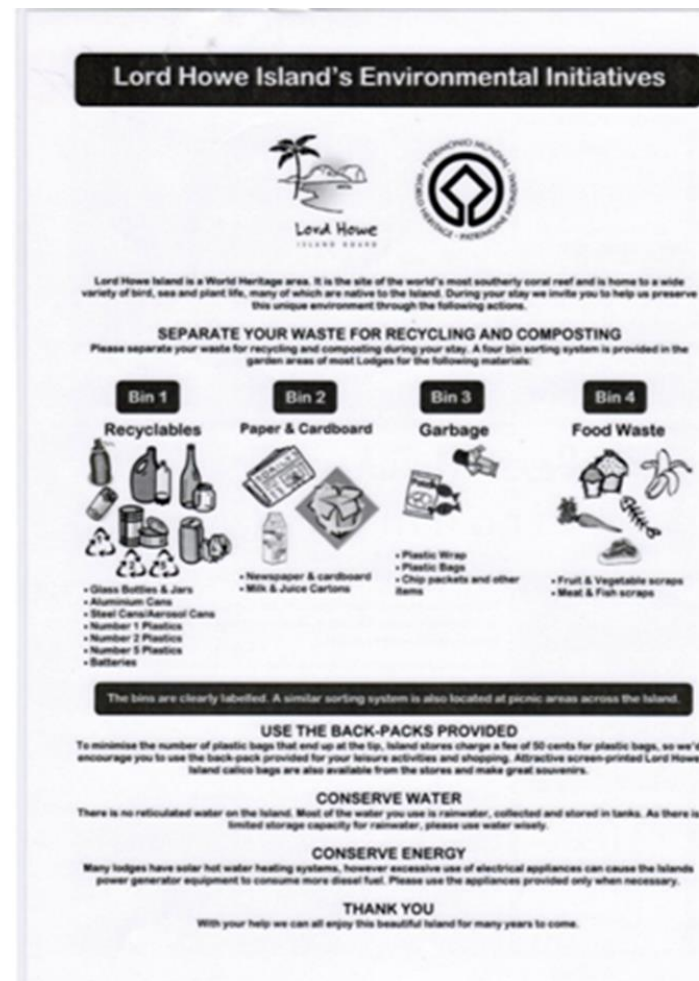
Action Plan

- Cars - existing policy - 1 on = 1 off
- Glass and cans - more keg beer
- Shrink wrap - returnable collapsible pallets to reduce
- Polystyrene takeaway, trays - eliminate, use cardboard
- Building waste - waste management plan
- Plastic shopping bags - charge 20c per bag, provide alternatives
- Nappies - provide mums with free trial compostable nappies
- Packaging - investigate bulk food outlet
- Plastic bin liners - provide bins for transport of waste
- Reuse buckets for food waste storage and transport
- Food waste - caddy and bio-bags
- Bulk food outlet
- NO LANDFILL !



Education

- ▶ Multi- faceted
- ▶ Bins, crates, stickers and flyers
- ▶ Purchasing Guidelines brochure
- ▶ Waste minimisation fact sheets
- ▶ Posters for accommodation rooms
- ▶ Flyer on plane
- ▶ Waste display at Museum for visitors
- ▶ Local newspaper “Waste wise” column
- ▶ School activities
- ▶ Earth Works education
 - ▶ Composting program
 - ▶ No dig gardening
 - ▶ Green cleaning



Recycle and reuse

- Garden waste
- **Food**
- Paper and cardboard
- Glass
- Plastics
- Aluminium, steel cans
- Whitegoods/metals
- Oils - motor/ cooking - biofuel
- Paint
- Batteries
- **Used clothing**
- **Fluorescent globes**
- TIP SHOP for reuse



Implementation

- **Funds** - state and commonwealth - World heritage
- **Technology selection** - interdepartmental committee
- **Local Waste Management Committee** - oversight - 3 years
 - board, staff, community reps,
 - APC - technical adviser
- **Implementation outsourced** - APC
- **Landfill** - Host community on mainland
- **Contracts** - shipping and processing
- **Training** - local staff to mainland
- **Launch**
 - Celebration of achievement - 5 June, 2000
 - Event - School children, politician's, community
 - Media - local, regional, national, international

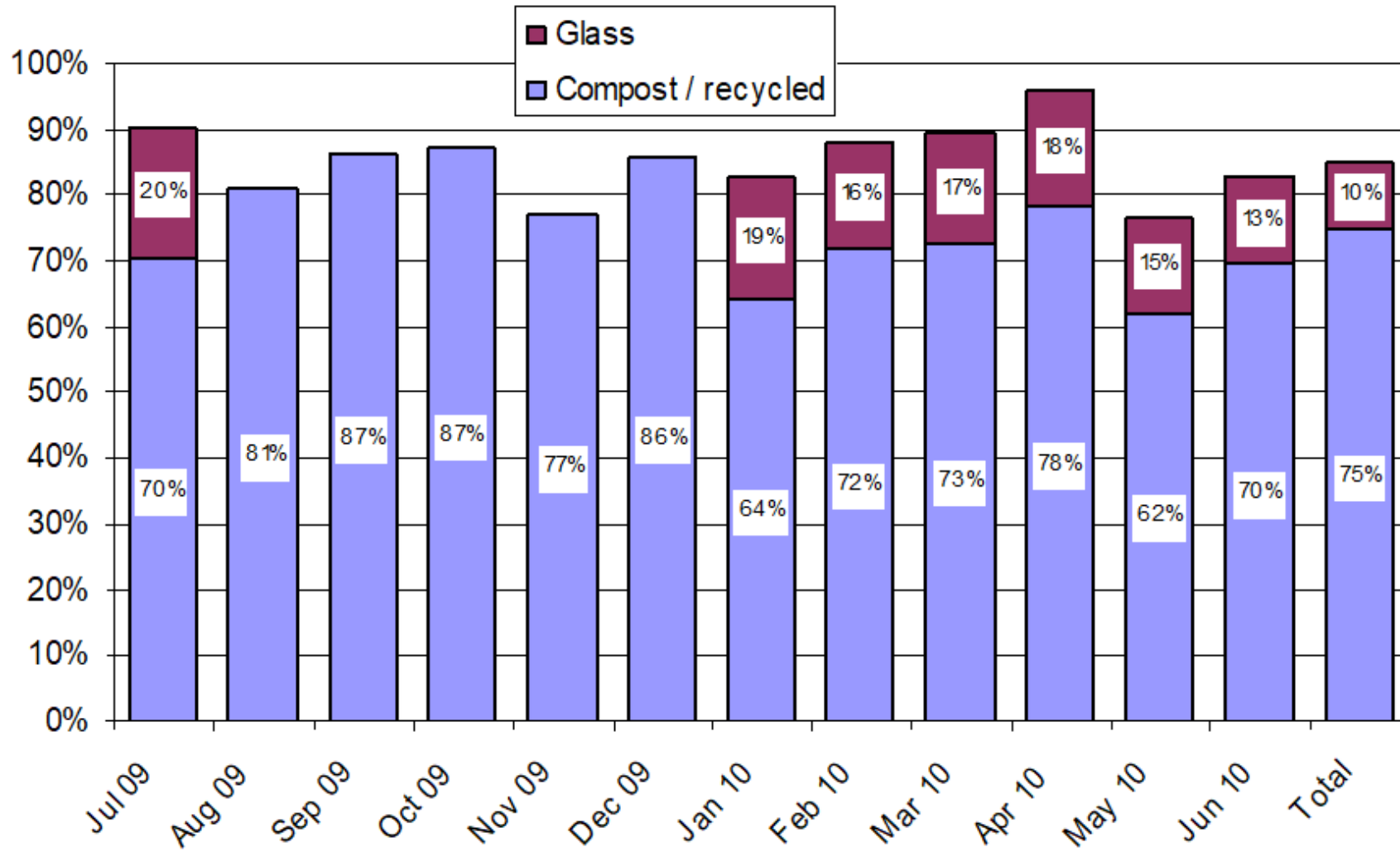


Continuous improvement ... 2010 Review - 58 new action items

- Modifications to shed, hard stand, storage bays, recycling
- New tractor, forklift with load cells
- Drying beds and reed beds for septic pump-out treatment.
- More recycling: glass crushing, EPS
- New Hot Rot compost
- Ship takes back their shrink wrap
- Australia post used collapsible pallets
- Opening hrs modified
- Staff reductions due to mechanisation
- User pays fee and charges - based on generation
- Now on island tours - behind the scene “tip tour”

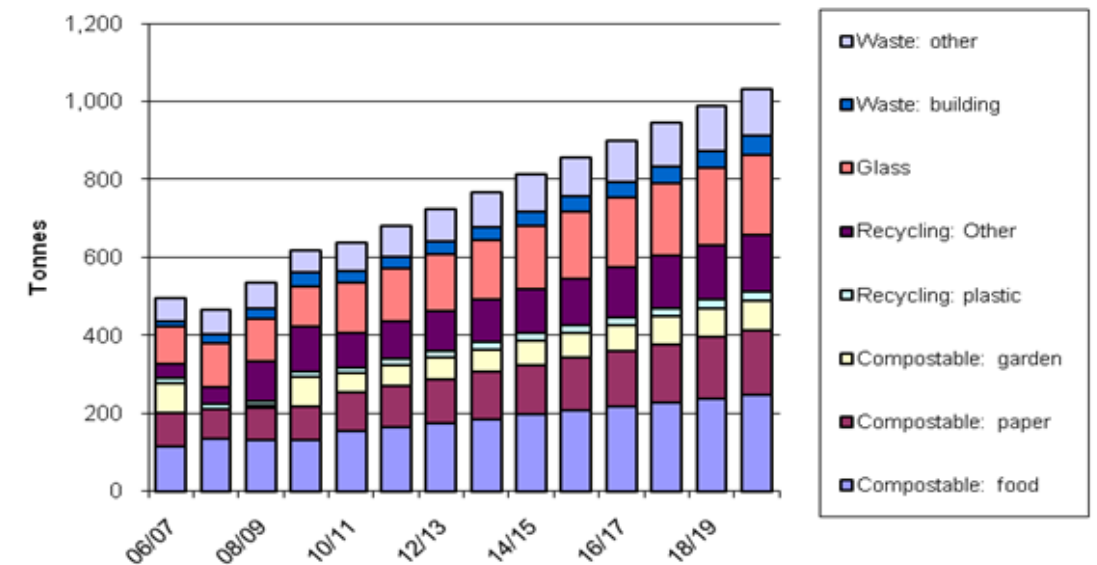


Monitoring and Evaluation



Challenges

- Letter to ministers over fees
- Waste streams change over time - baby boom
- New accommodation and hospitality providers
- Ongoing seasonal changes in hospitality staff
- Transient nature of residents to the Island
- New suppliers are being used by the Is
- Increased construction activity
- Increased consumption
- More tourists
- Soft plastics



From this to this.



Pre 2000

Post 2000



Today



MI Observations

- Great waste facility
- TIP SHOP
- Good clean separation
- Kerbside recycling service
- Food waste processing pilot
- School screen-printing bags
- Plastic free journey
- Zero Waste committee
- People POWER
- Love of the island



Key differences

- 1st island connected to a mainland council
- World Heritage connection
- Access to local, state and federal funds
- Infrastructure is well advanced
- Kerbside recycling services
- FOGO strategy
- Reusables rebate



Reusables Rebate

Council is offering households a 50% rebate (up to a maximum of \$100) for purchases of reusable nappies, incontinence and sanitary products to encourage sustainable choices and support our community in reducing waste.



Thank you

Anne - 0426 251 271
anne@aprince.com.au